

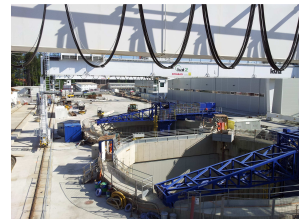


In Austria, VMT installed the Segment Documentation System SDS to control the reinforcement production, segment production, storage, logistic, segment installation at TBM and the WLAN infrastructure.

Deutschlandsberg, Austria Koralmtunnel KAT 2

Project Start	August 2012	
Contractor	ARGE KAT 2 (Strabag / Jäger Bau)	
Navigation System	Crane Navigation - works in connection with the SDS. Responsible to show the crane driver the position of the ordered segment	Navigate Tunnelling
Information Systems	- Segment Documentation System SDS - IRIS.tunnel	Manage Information
Service	- Commissioning jobsite	Service Precision

Storage place of the jobsite Koralmtunnel



Production line for the segments



Visualization of the crane navigation

