



The Crossrail Project is Europe's biggest metro extension under Central London. The project set high requirements on safety and quality. For this task VMT provides the technology for navigation, information and monitoring.

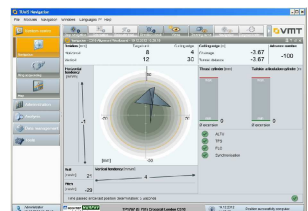
# London, Great Britain C310 Crossrail London

Project Start	2012
Contractor	HMJV - Hochtief Murphy Joint Venture
<b>Navigate Tunnelling</b>	
Navigation System	TUnIS Navigation TBM <sup>Laser</sup>
Machine Type	Herrenknecht / Mixshield
Diameter	7,08 m
Tunnel Length	2.800 m
<b>Manage Information</b>	
Information Systems	- TUnIS Navigation Office - IRIS.tunnelviewer
<b>Monitor Process</b>	
Monitoring Systems	- TUnIS Ring Planarity Check - Automatic Tail Skin Clearance Measurement System SLuM
<b>Service Precision</b>	
Service	- Ring Sequence Prediction - Alignment Calculation - TBM Survey in Factory

Start Position of TBM



Display of TUnIS TBM Laser



Tachymeter

